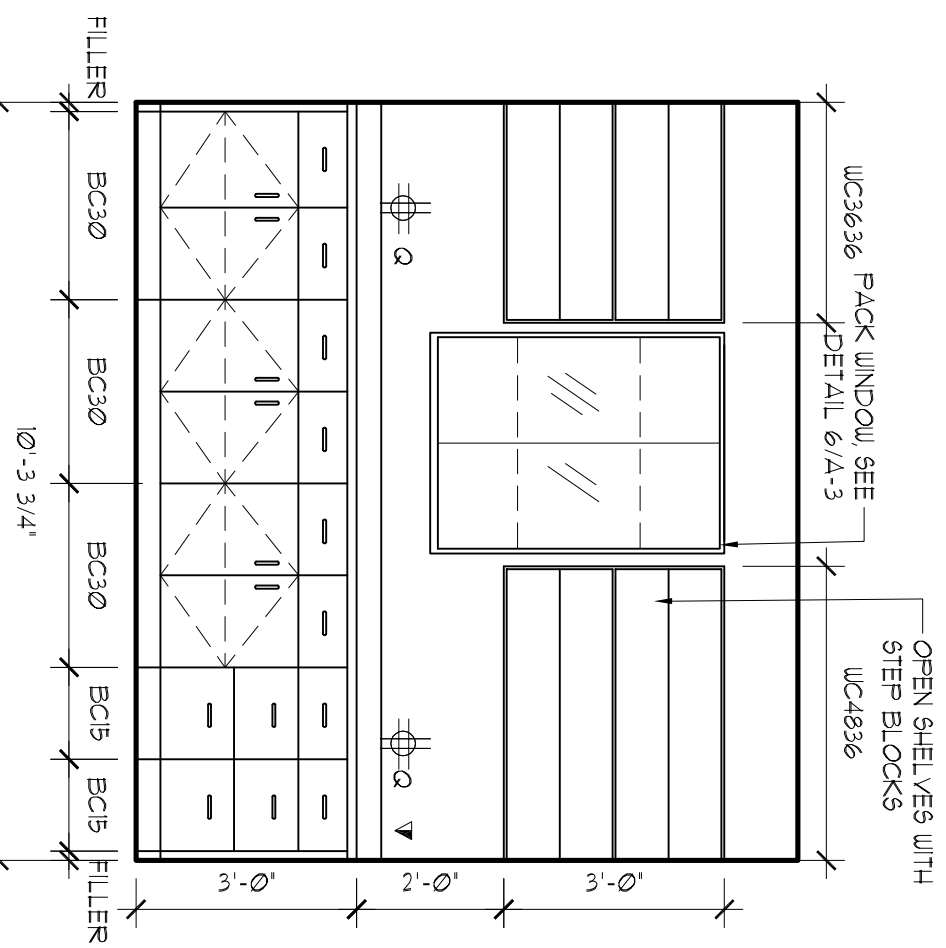
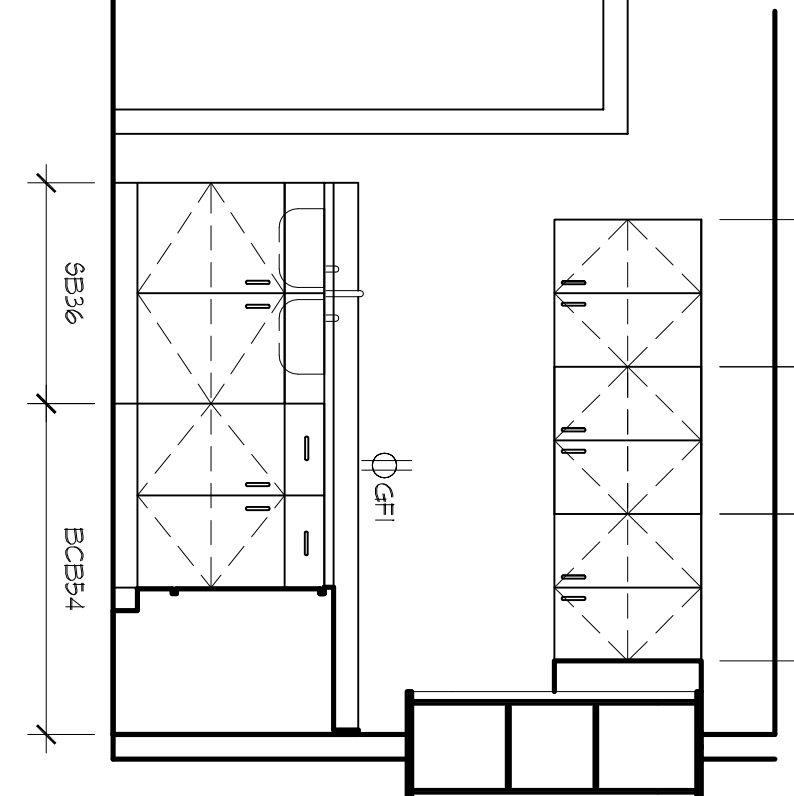
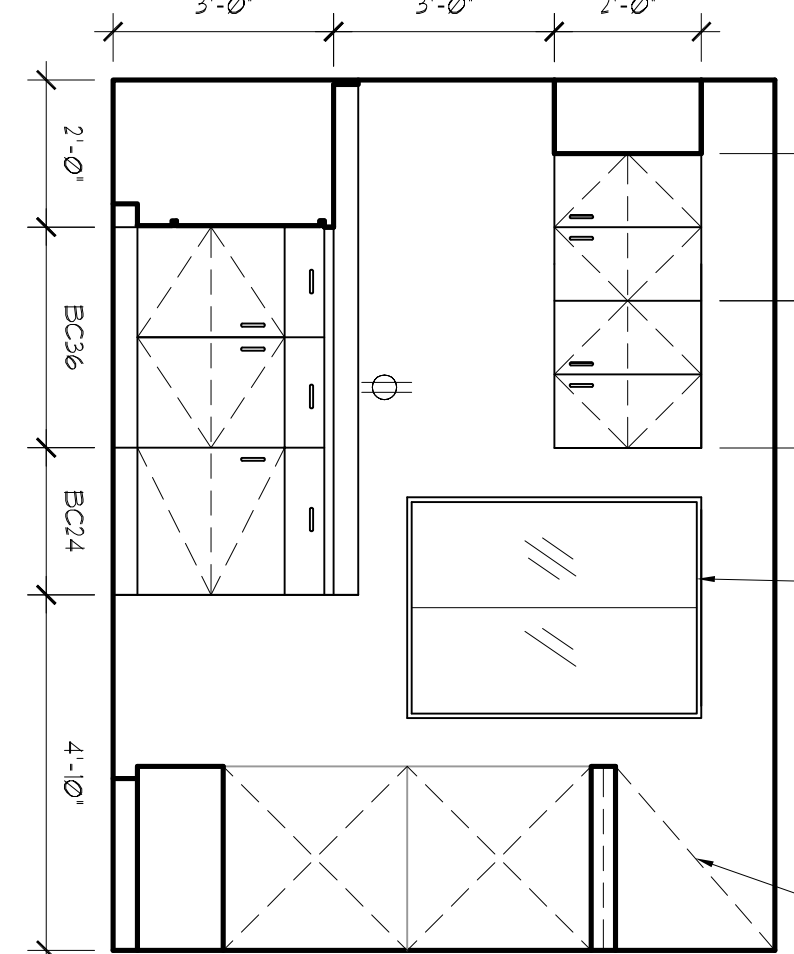
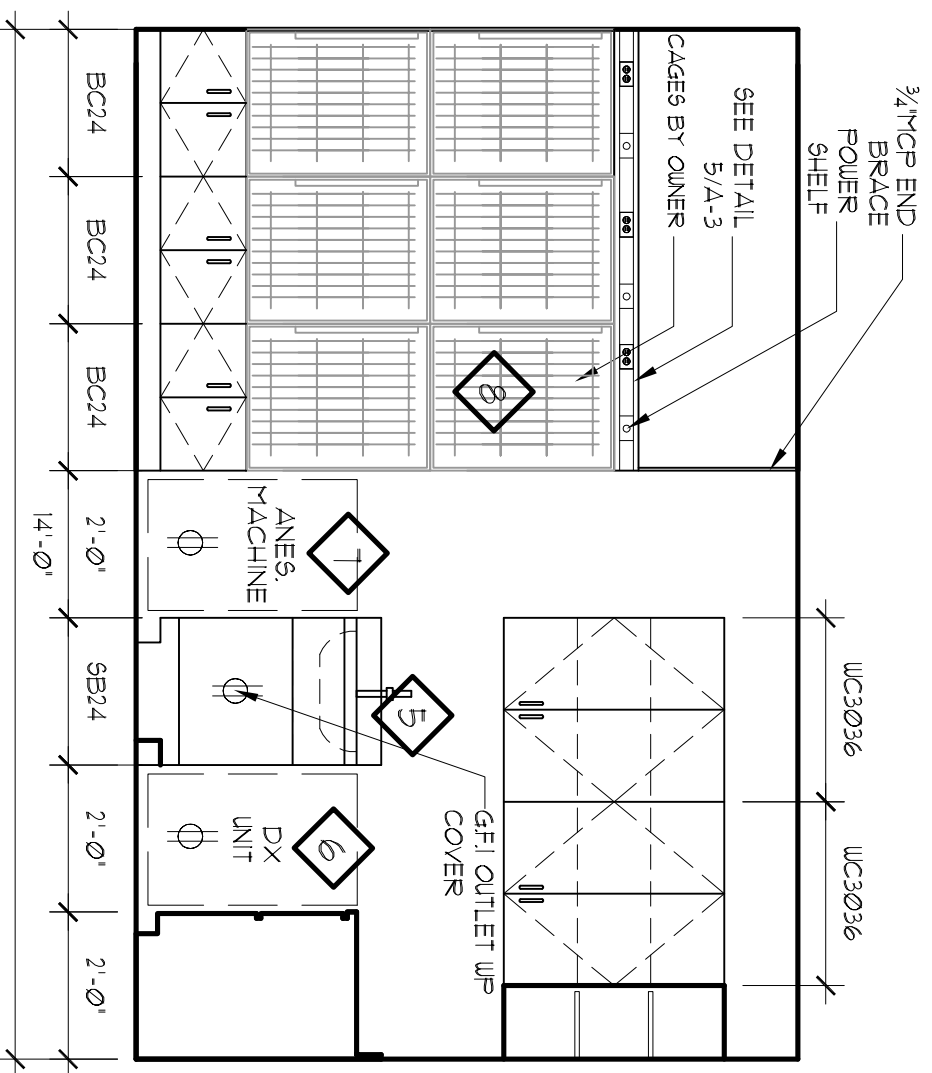
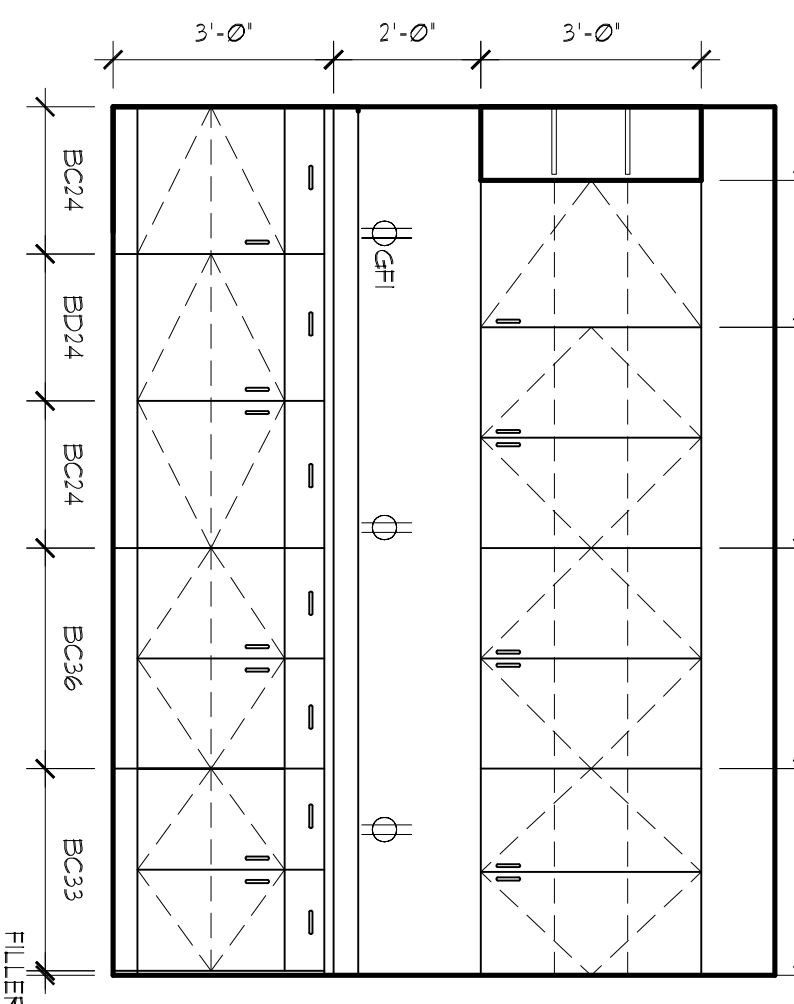
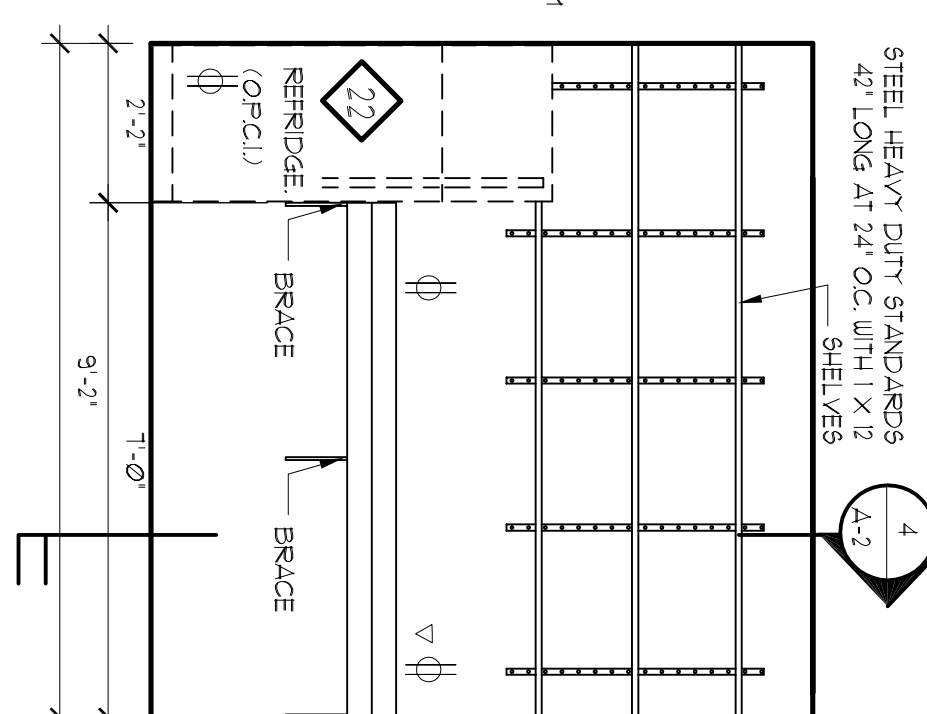
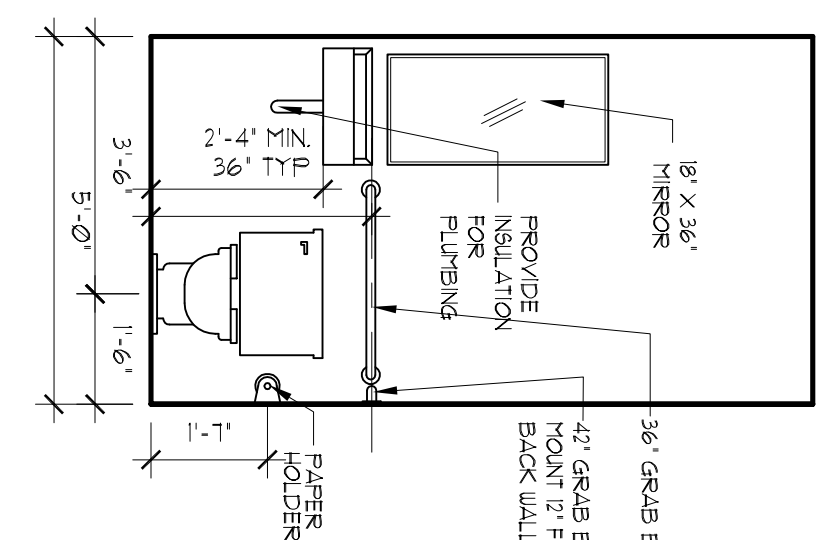
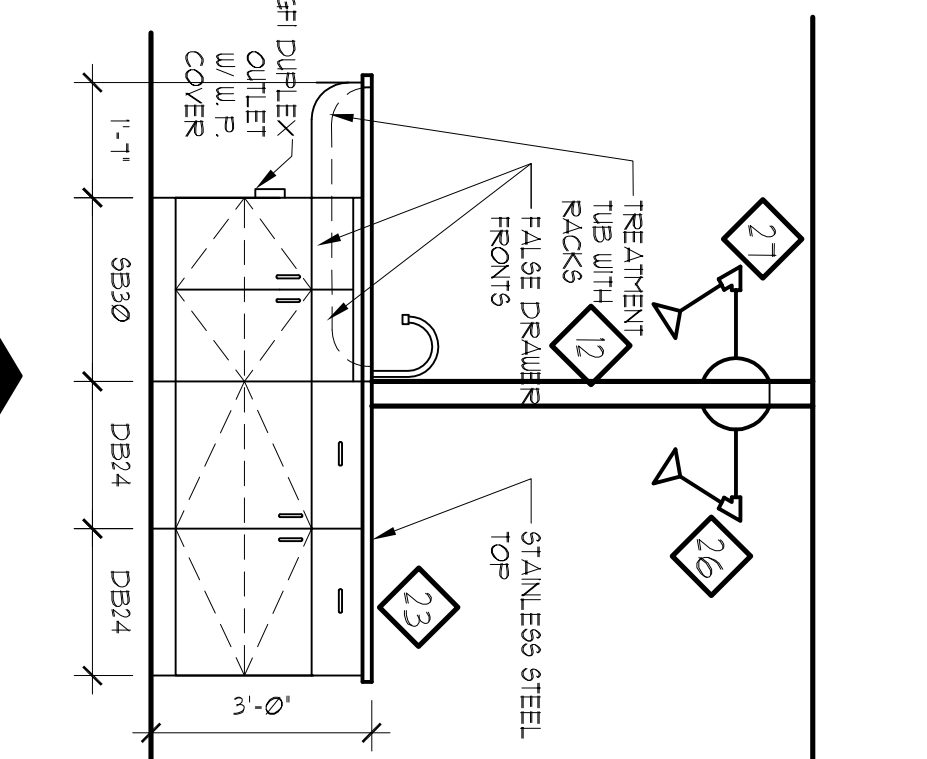
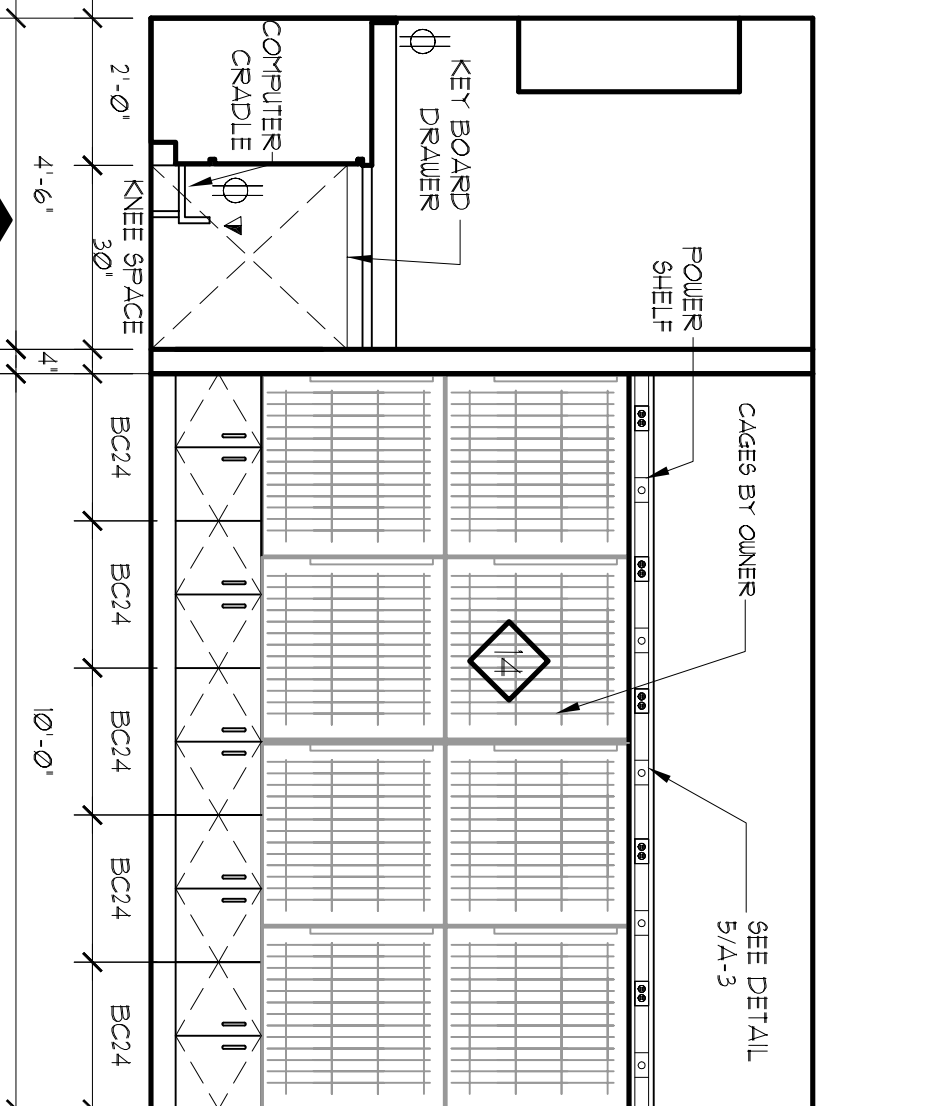
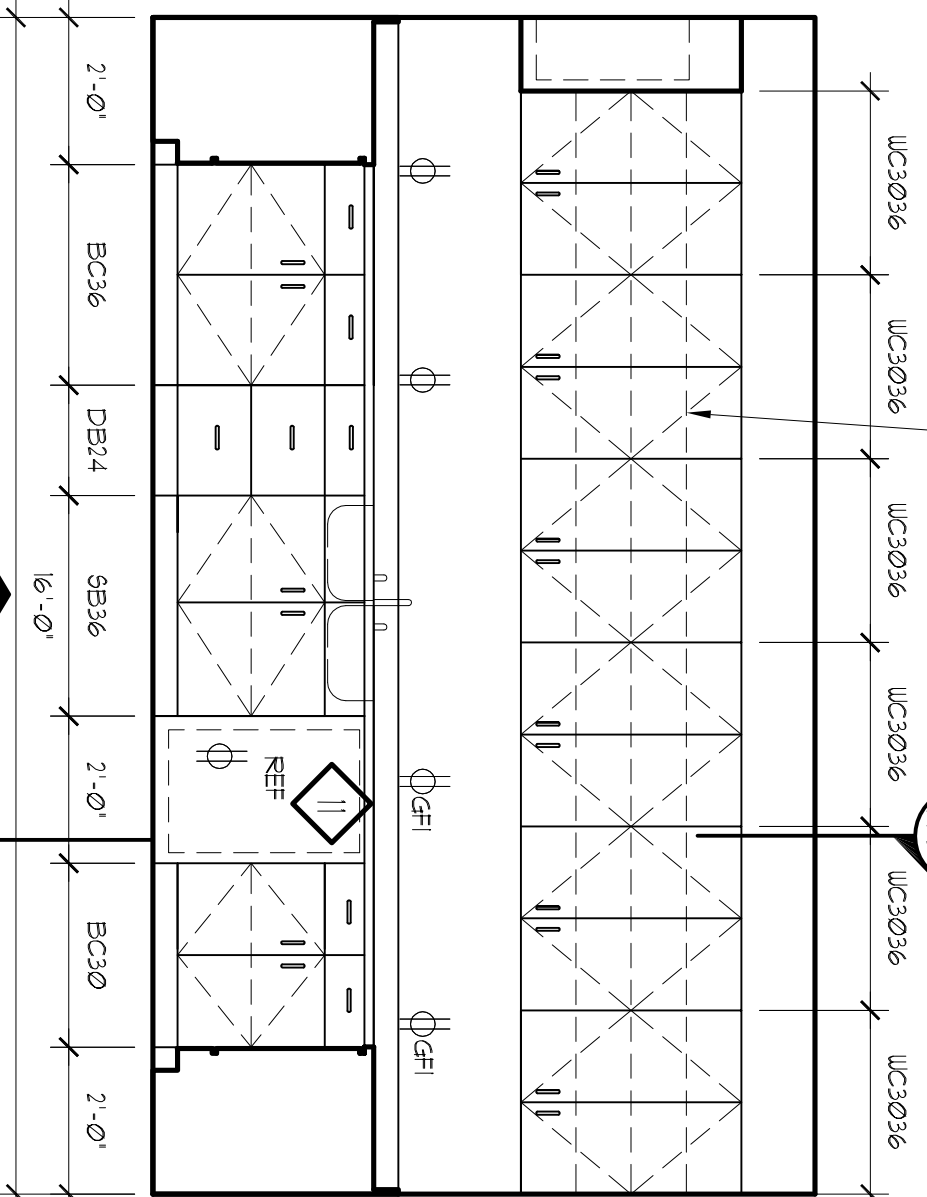
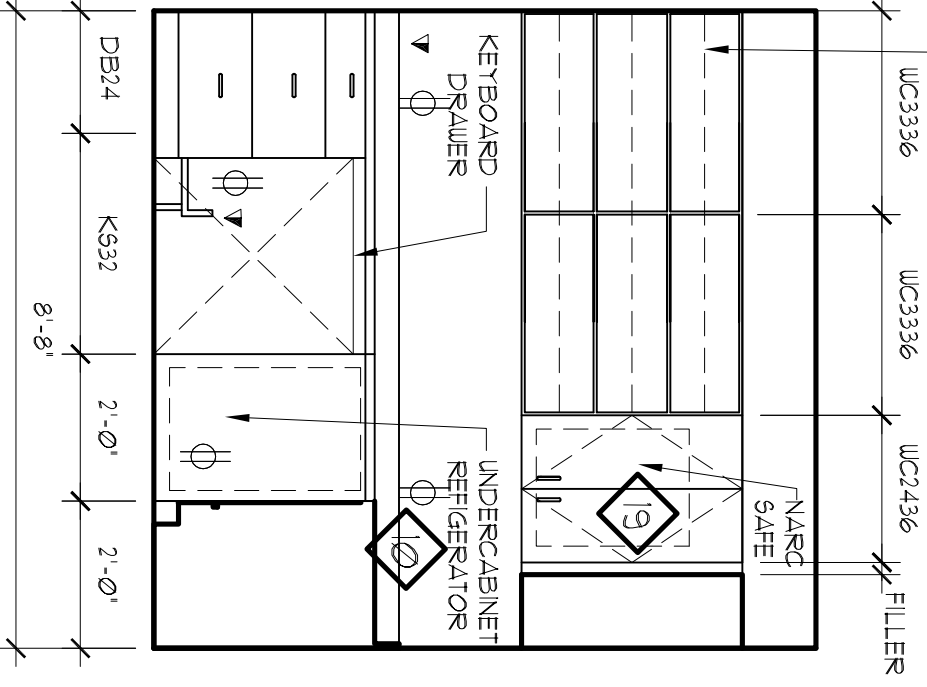


**1** RECEPTION DESK  
3/8" = 1'-0"



**2** 5X PACK A  
3/8" = 1'-0"

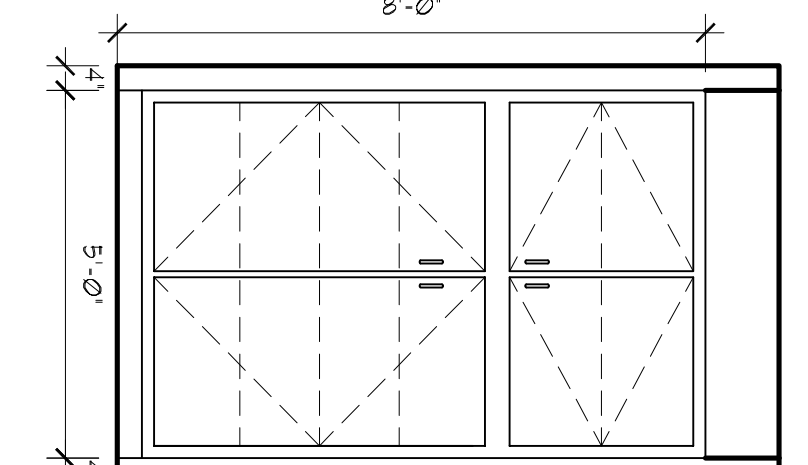
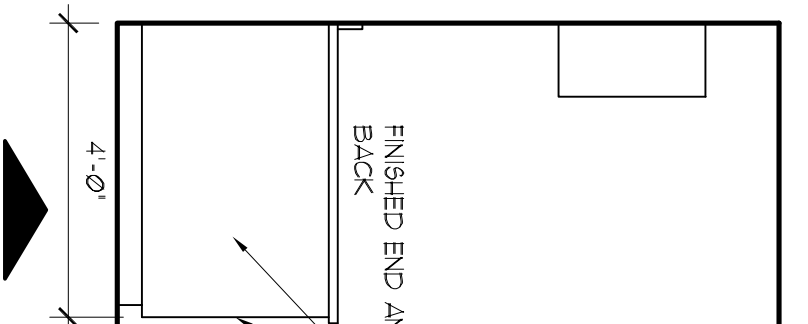
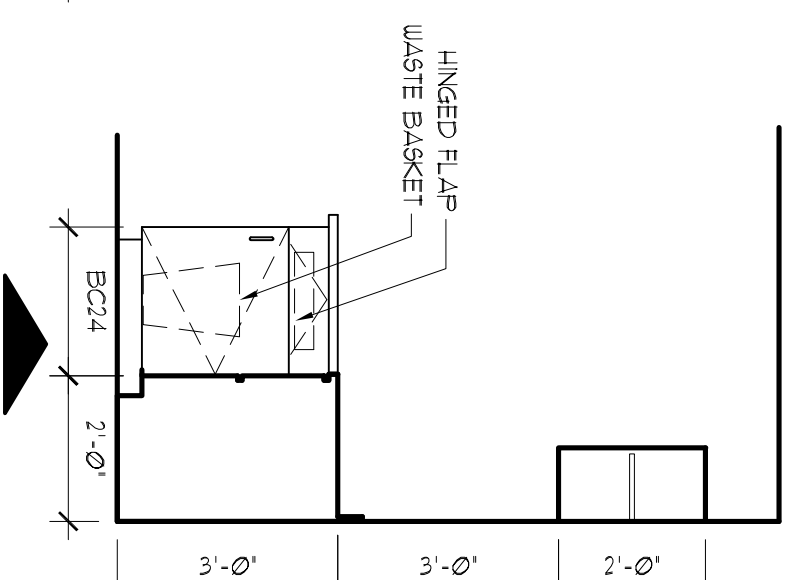
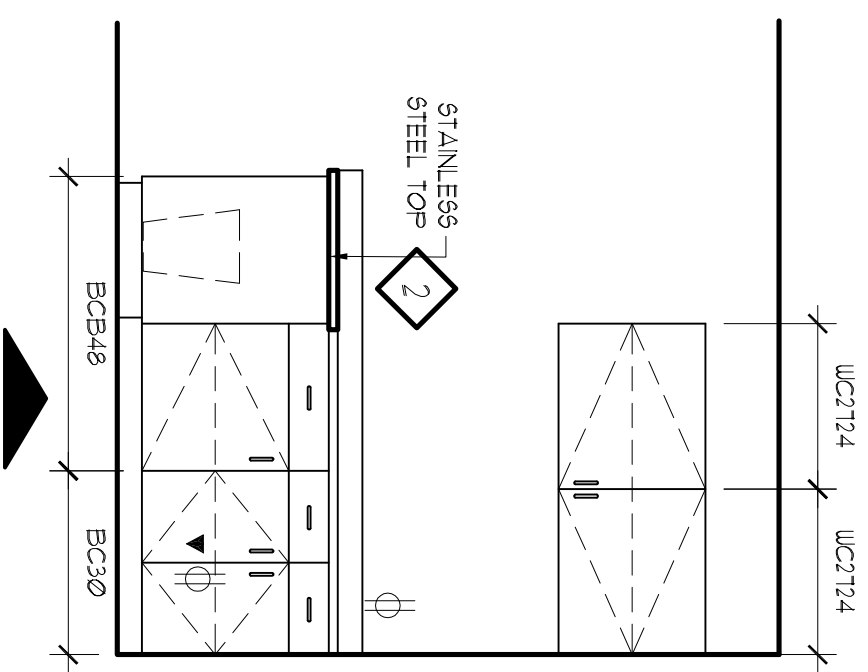
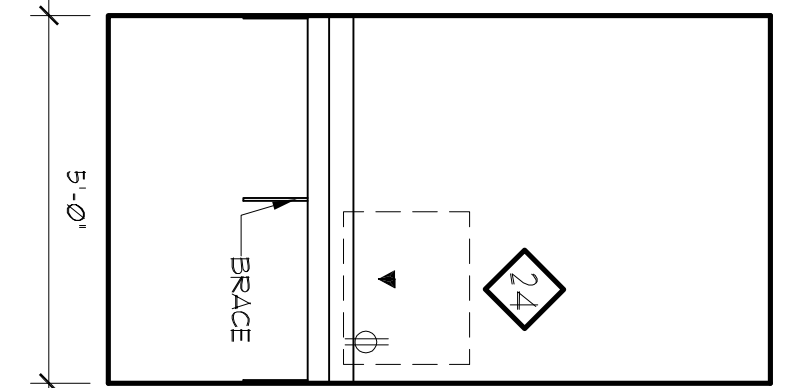
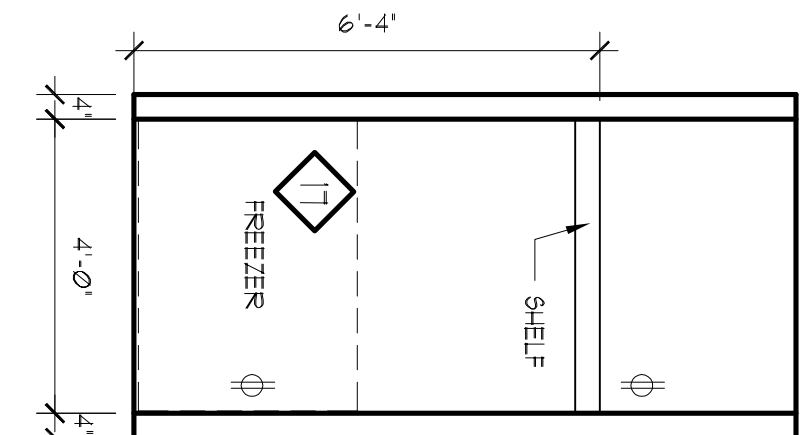
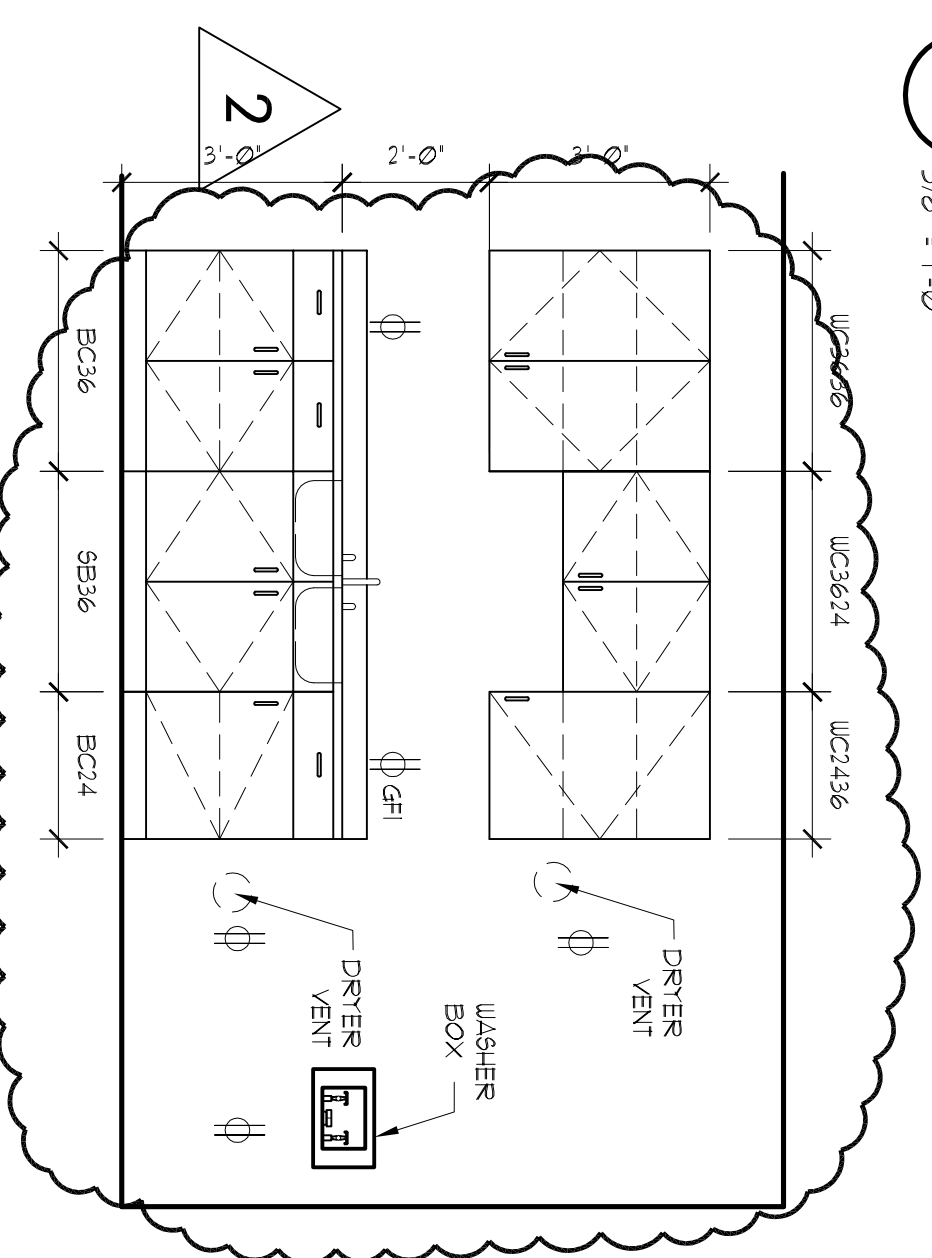
**3** 5X  
3/8" = 1'-0"



**4** TX  
3/8" = 1'-0"

**5** RESTROOM  
3/8" = 1'-0"

**6** BREAKROOM  
3/8" = 1'-0"



**7** LAUNDRY  
3/8" = 1'-0"

**8** MORGUE  
3/8" = 1'-0"

**9** X-RAY  
3/8" = 1'-0"

**10** EXAM 1 AND 2  
3/8" = 1'-0"

**11** STORAGE  
3/8" = 1'-0"

not released for construction

**A-4**

Release/Revision Schedule  
02.26.09 PERMIT SET  
04.29.09 PRICING SET  
06.25.09 PERMIT COMMENTS  
07.15.09 REVISION 1  
07.15.09 REVISION 2  
HDA Job Number: 0810  
This drawing is an instrument of service & shall remain the property of the Architect. Do not reproduce, publish or use in any way without the consent of the Architect.

INTERIOR ELEVATIONS  
Drawn By: CDO  
Checked By: PJH

All Cats Health Clinic  
Dr. Jennifer Palmer  
4420 Fieldcrest Court  
Cumming, GA 30040

**HDA** ARCHITECTS  
**HILL DESIGN ASSOCIATES ARCHITECTS, INC.**  
136 Academy Ave  
Doraville, Georgia  
30034  
Tel: 706.531.9998  
Fax: 706.531.9966  
Toll: 888.271.9232  
www.hda-architects.com